



LEEDS FAITH IN SCHOOLS NEWSLETTER

WINTER
2025 / 2026

HAPPY NEW YEAR!



FROM ALL OF US
AT TEAM LFIS

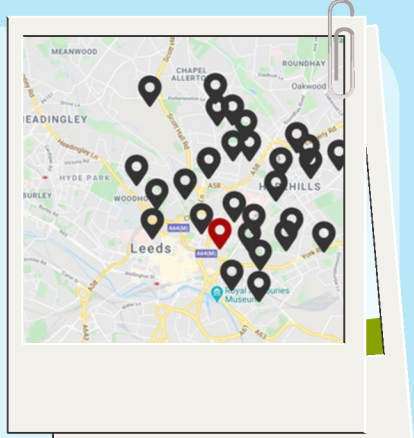
LETTER FROM THE TEAM LEADER

Dear friends,

This time last year we celebrated 30 years of LFIS supporting high schools in our city. Looking ahead to 2026, I'm reminded that God has blessed our city with 40+ secondary schools attended by over 60,000 young people. A generation of young people seeking a passion that's worth giving their lives to. What an incredible opportunity we have to point these young people to Jesus who is seeking a relationship with them.

If we dare to have faith for this generation to truly know Jesus, how might our communities change? This year Leeds Faith In Schools seeks to grow because there are thousands of young people in this city who are yet to hear the Gospel. We want to change that! By being a consistent, credible presence right in the midst of where our young people are, we hope to continue bringing the Gospel to life in word and deed.

Ultimately the vision LFIS serves is the vision of the church - to seek the lost with good news. As we boldly step into more schools, hopeful for God's provision to be in every school in the city, **we need your help!** Please consider standing with us prayerfully, practically and financially in this season as we work to grow into all that God is opening up to us at this time.



Ben Cordy,
Team Leader



OUR TEAM PRAYER REQUESTS FOR 2026

To grow and evolve the work I am doing in my current schools and hopefully be introduced into a new school to offer support with a potential Christian union!

Molly



For God to give us more opportunities to share the Gospel with young people who have never heard it before and to grow passion for young people in the local church!

Mark



For good and strong connections in the schools I am in and with the mentees I see. To be able to reflect God's love to the students I see.

Maria

For setting up a new, after school Drop In for Priesthorpe students in Pudsey. It is a good way of connecting local churches with youth work and the local students!

Beccy

For seeing many more young people taking steps towards a relationship with Jesus!

Kim



To be a practical and spiritual blessing to the team and enable them to bring the kingdom to their schools and activities!

Pip

To help manage changes in routine and establishing a new schedule in different schools.

Louisa



To be able to reach more young people through connections with new schools and for the funding to keep our work in the high schools around Leeds!

Ben



LFIS NEWS HIGHLIGHTS

OUR TEAM IS GROWING!

We are so grateful to God that there is such a need in our city that we get to welcome new team members helping to expand our work bringing the Good News to the young people of our city.

Join us in praying for both Pip and Maria as they begin their new roles with team LFIS!



TEAM



NEW!

Pip is delighted to have rejoined LFIS as administrator while Emma is on maternity leave. After 2.5 years living in Vancouver, she has moved back to Leeds full of faith for what God will do in our community this year. She is passionate about prayer and is keen to encourage the team in their roles. For any queries you can email her at pip@lfis.org.

Maria is joining the LFIS team as our newest schools worker! Maria will be joining Mark in Prince Henry's and Garforth Academy with the potential to start supporting in new schools as our connections develop. Maria is joining us from 5 years of experience working in Leeds with local churches and youth groups!

NEW!



SCHOOL SPOTLIGHT

COOP ACADEMY PRIESTHORPE



It has now been 8 months since I started working in Priesthorpe Academy. Since then there is so much to thank God for as our presence and support in school continues to grow! As the school's need for supporting students increased, there is a hunger from the school for more input from LFIS. The number of mentees I see has grown from 3 to 10 and since September I started hosting Rock Solid (lunch group with year 7) as well as running a Kardia course (a mental health support group).

Please continue to pray for more to happen in Priesthorpe as they have booked in their first LFIS-led Easter lessons. This will be a chance for us to teach the Gospel to several classes of students!

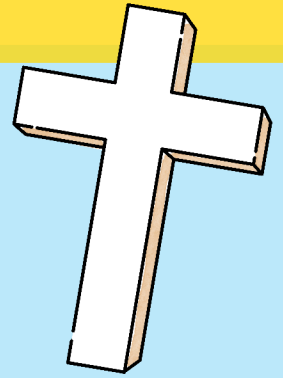
Beccy Pont
Schools Worker



AUTUMN TERM HIGHLIGHTS

D.T.S.W

Every year we take part in the “Discovering The Space Within” days at Abbey Grange. They are an amazing opportunity to meet and pray with all 260 year 7 students. We love being able to build relationships with students at this early stage of their high school career - it means that as they grow, our work has greater impact because of the foundation we have built with them.



During DTSW we spend time looking at who God says they are, what it means to be part of the school community, letting go of worries and remembering that when God forgives us he completely forgets what we have done. Students love the sessions; this year as one girl was going around she said, “we should do this every term!”



Kim Lawrence
Senior School Worker



We attended the National Youth Ministry Weekend (NYMW) again in November. NYMW is a yearly conference aimed at Christian youth workers & is a weekend of teaching, worship, and fellowship, where we get to spend time with God together as well as going to workshops & seminars that help us in our work with young people.

This year we attended sessions on topics like: trauma-informed youth ministry; why your phone habits are undermining your youth work; apologetics in a fake news world; and discipleship in a time of polarisation. We also spent quality time together as a team and came back challenged, refreshed, and excited to implement the great ideas that we heard.

Please pray for us as we continue to work with young people in schools across Leeds doing our best to reach them in the ways that they need.



Louisa Lawrence
Mentoring Lead



CHRISTMAS LESSONS



We have been very festive in our lessons, teaching what Christmas means for Christians to Year 7s across the whole city. We led 50 lessons in 5 of our schools teaching over 1,500 students.

Our lessons focused on what the first Christmas meant for the people in the nativity story, then showing the students what it might mean for them today.

We had a lot of fun getting students dressed up as characters from the nativity; we had Marys with their baby bumps, Wise Men in their crowns, and angels swishing their wings around. During the lesson, we focused on Mary, the shepherds, the Wise Men, and Jesus, and how the Christmas story impacted them.

We ended with the question: which of these characters do the students relate to? Could the Christmas story be as impactful in their lives as it was for the shepherds or the Wise Men? We were then able to have a moment in each lesson where we could share our own testimonies of times when we have related to one of the characters.



Kim Lawrence
Senior School Worker



TESTIMONIES FROM 2025!



2025 was the year I saw a hunger and curiosity about God with the students more than I have before! It was so encouraging to have multiple conversations with students about life, spirituality, ethics and the evidence for God's existence. I hope to see more of this hunger in the students I engaged with in the next year!

Mark Atkins,
Schools Worker



I led most of our Christmas lessons in Brigshaw. In one of the lessons I had a lovely but tricky class with a majority of neurodivergent students. At first this seemed tricky but I was able to confidently adjust the lesson plan in order to facilitate the group's needs and we had a really good open discussion about Christmas and what it means to them and others. The teacher was really pleased with the way the lesson went for the group.

Molly Skaife,
Schools Worker



In June 2025 we took training to become facilitators of the Kardia course, which nurtures teens' minds as they navigate healthy ways to cope with anxiety and depression. I ran this course for the first time in Abbey Grange in December - it ran for 8 weeks with 8 girls, and the feedback at the end was such a highlight! One of the girls who initially disclosed huge struggles with her mental health said, "I got to know I was not the only one. I feel this is so confidential and safe and this course has changed me so much!"

Beccy Pont,
Schools Worker



LEEDS LENT PRAYER DIARY



We are privileged to be included in this year's Leeds Lent Prayer Diary, created by Leeds Christian Community Trust. The launch event is on 12th February, where 40+ charities across Leeds will gather in one place to network and intentionally pray for the city of Leeds before entering lent! It is a great chance for us to share the vision and core values of LFIS as people come together to pray over our work in the city.

Visit the Leeds Christian Community Trust website to order your copy.

HOW TO GET INVOLVED THIS YEAR

Is there any way you can join us in our work? Yes! Aside from financial giving, one of the ways we can increase the work of Leeds Faith in Schools is through volunteering. Our amazing volunteers help us by mentoring students, helping with regular drop-ins and lunch clubs, and supporting in assemblies and prayer spaces once or twice a term. We would love to expand our volunteer presence across our schools; it is a great way for many students to connect with trusted adults and it really helps us to increase our capacity for bringing Good News to the high schools of Leeds.

If you would like to explore volunteering with us, please do get in touch - email pip@lfis.org to discuss the opportunities that would work best for you!

Please note that volunteering roles will be subject to our safeguarding processes including a DBS check.

giftaid it

If you are a UK taxpayer and want Leeds Faith In Schools to gift aid donations scan here



Scan here to choose how you receive these newsletters!



Title: Full Name: Previous name (if applicable):

Address: Postcode:

Email: Phone:

I would like to give: ☐ £10 ☐ £20 ☐ £50 or: £ as a one off donation (x) ☐ or every month starting on:

NI number: / /

Providing your NI number will help us verify to HMRC that you are a UK taxpayer.

Please pay: Leeds Faith in Schools, The Co-operative Bank, 08-92-99 for the credit of account number 65801778

Bank & address: Acc. Number: Sort Code:

Signature: Date:

Gift aid? I am a UK taxpayer and I would like Leeds Faith in Schools to treat as Gift Aid donations:

giftaid it

☐ all donations made in the past 4 years and any I make in the future OR

☐ all donations made since / / and any I make in the future.

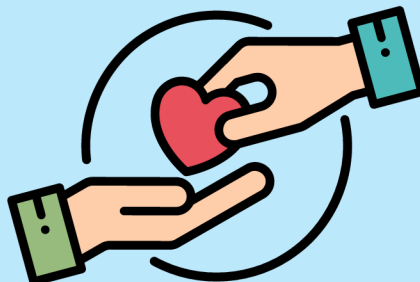
I confirm that I am a UK taxpayer. I understand that if I pay less Income Tax and/or Capital Gains Tax than the amount of Gift Aid claimed on all my donations in that tax year it is my responsibility to pay any difference.

Signature: Date:

Please return this form to: Leeds Faith in Schools,
The Cottage, Raynel Drive, Leeds, LS16 6BS



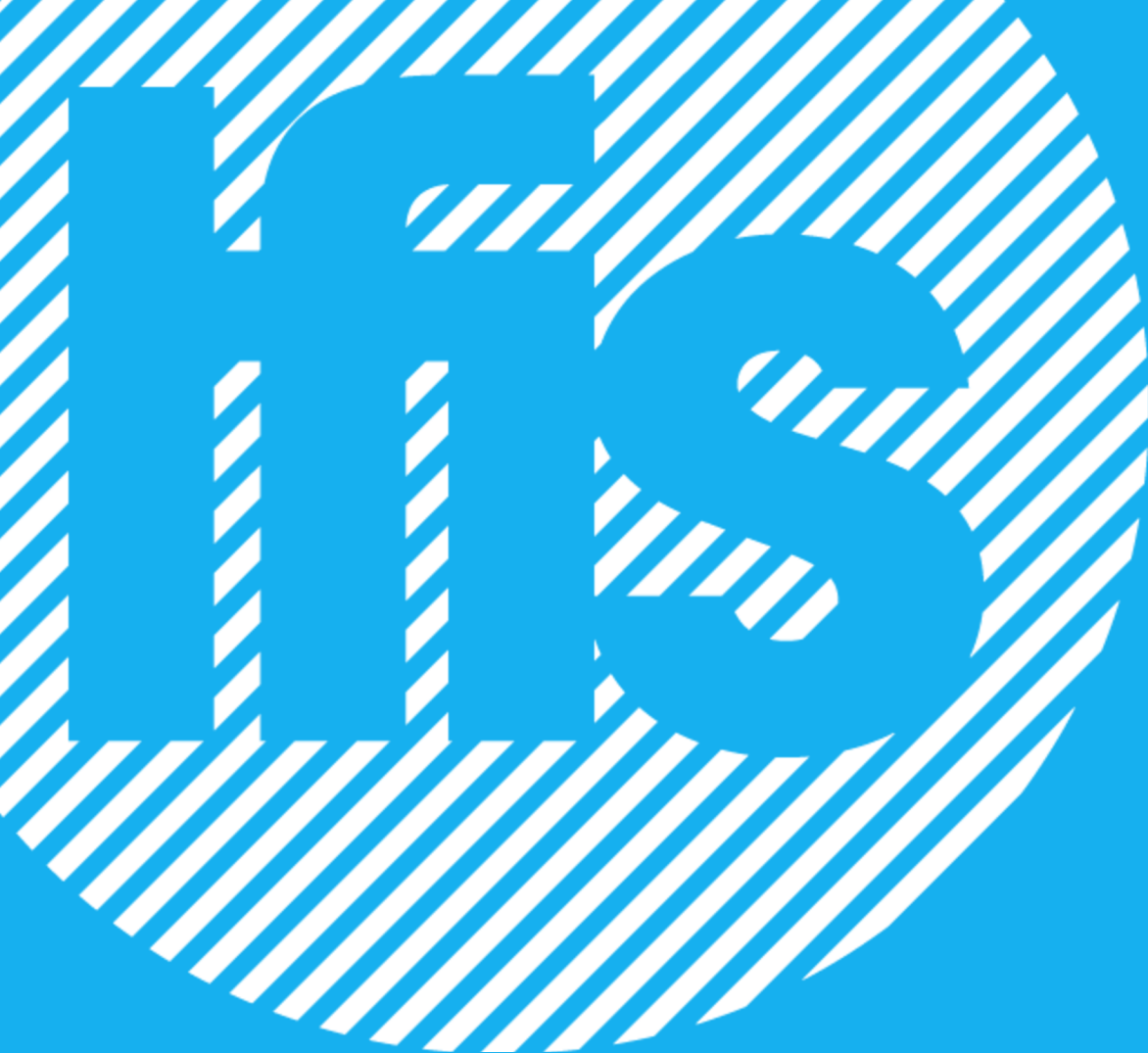
PRAY



DONATE



VOLUNTEER



GOOD NEWS TO THE HIGH SCHOOLS OF LEEDS

THE COTTAGE, ST PAUL'S CHURCH, RAYNEL DRIVE, LS16 6BS
SUMMER | 2025



INFO@LFIS.ORG



@TEAMLFIS